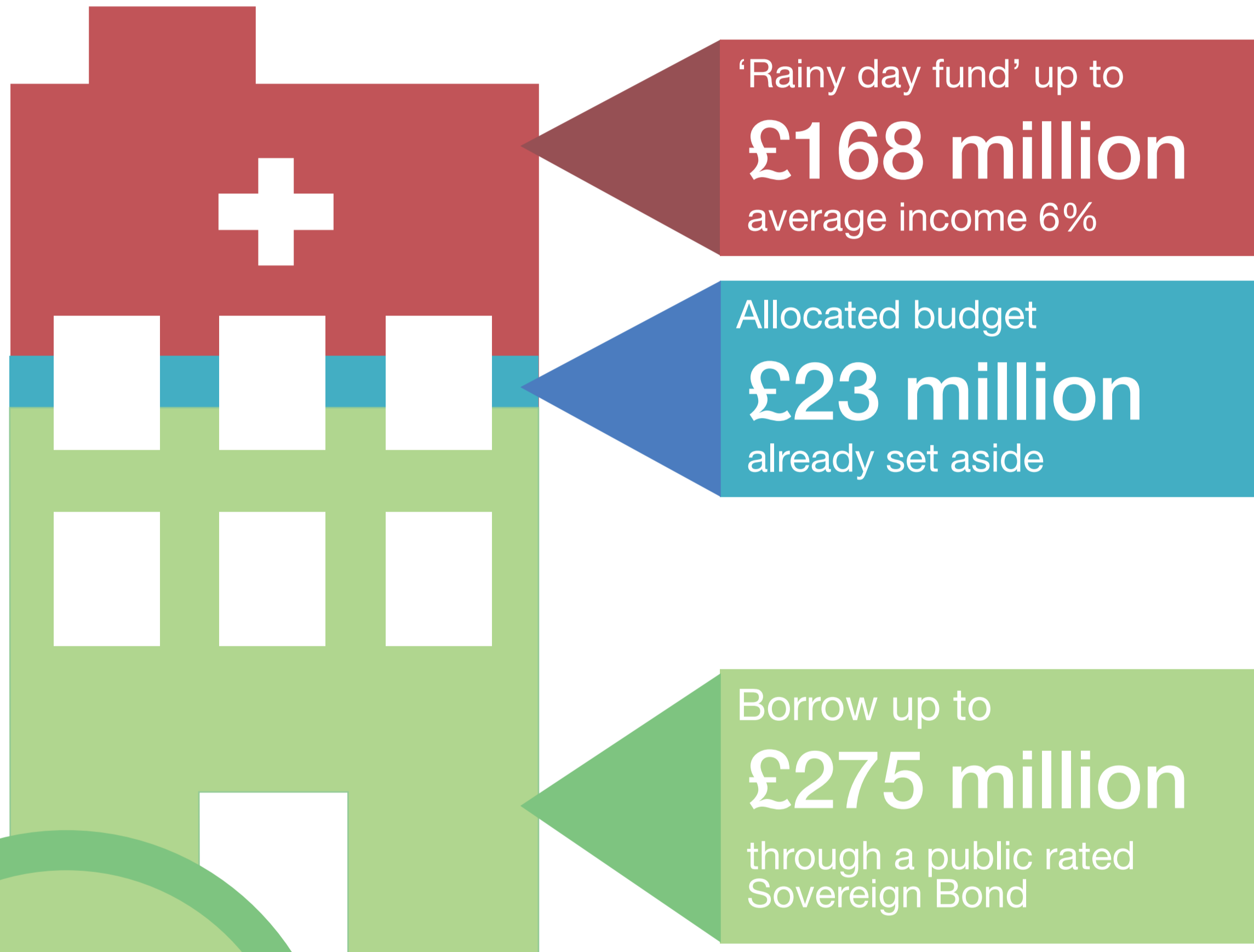


COSTS

The new hospital will cost an estimated

£466 million



Sovereign Bond
Fixed Rate
2.625%

- ✓ Favourable climate for borrowing
- ✓ Fixed interest rate

WHY ARE HOSPITALS CHEAPER TO BUILD ABROAD?

Building in Jersey is more expensive than building in the UK. We have carried out detailed cost assessments, overseen by experts who have costed many new hospitals before.

There are three questions that must be considered before comparing the costs with other hospitals:

