

# AMENITY OF NEIGHBOURING RESIDENTS

## LIMITING THE IMPACT ON NEIGHBOURING RESIDENTS

We are developing a building that avoids or limits the overshadowing of properties surrounding the development site, in particular residential properties.

A technical assessment is being carried out of the impact on the level of daylight and sunlight received by surrounding properties, using professional industry guidance set by the Building Research Establishment (BRE).

The assessment looks at about 1,500 windows around the site to assess sunlight and daylight. We are using the results to provide a solution that fits with the local area.

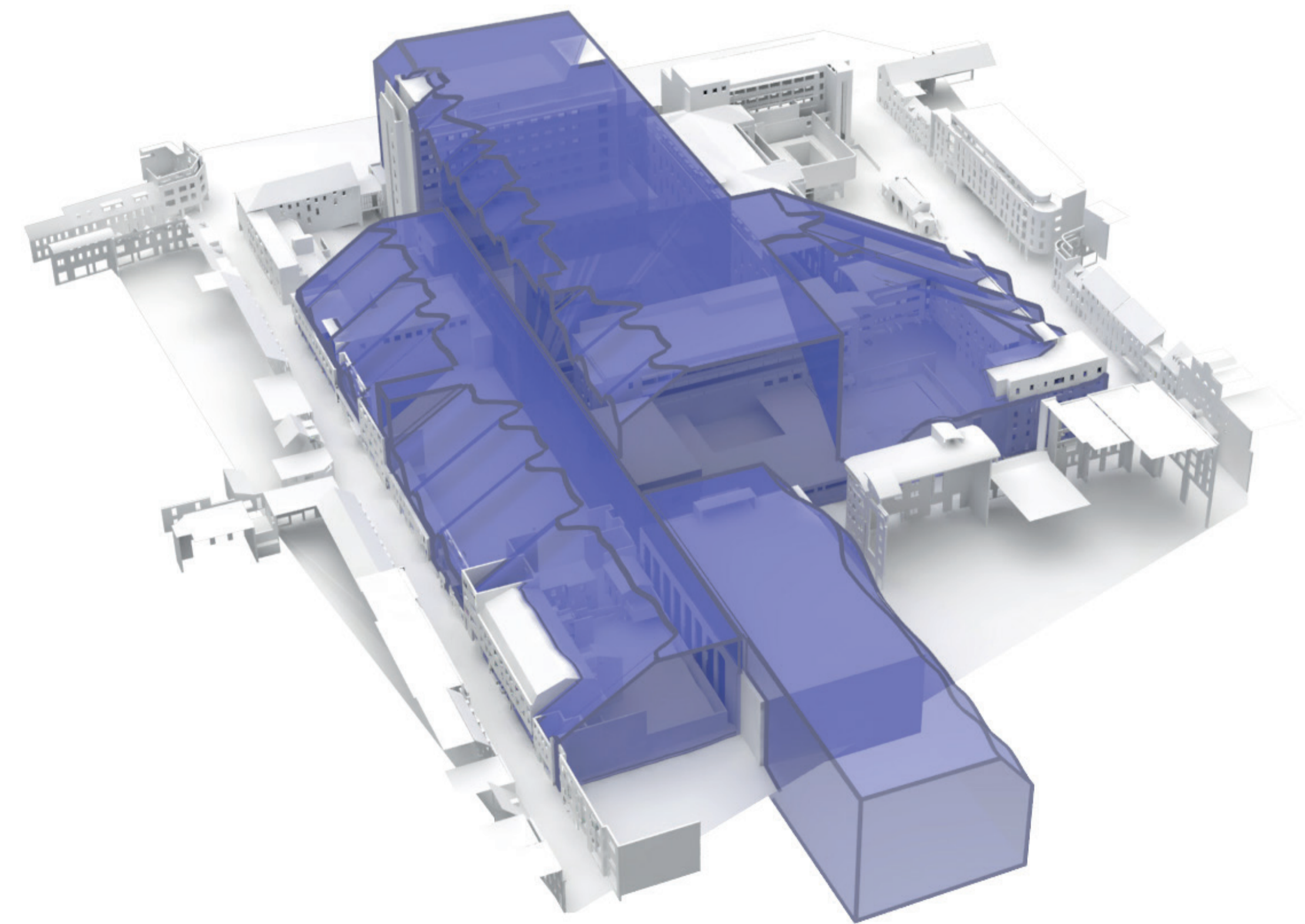
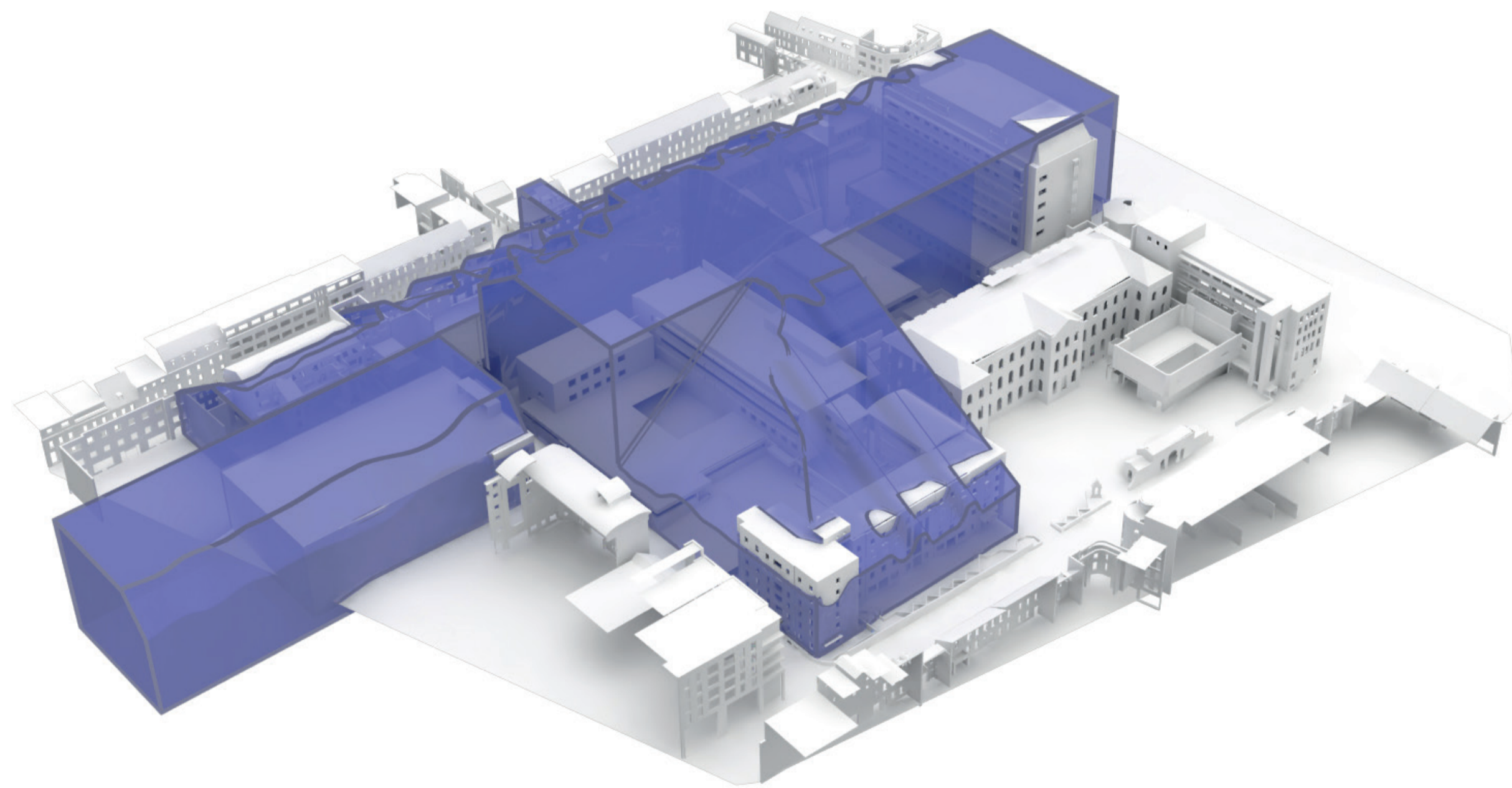
A full report will be submitted as part of the planning application.

The testing is being used to refine the height and massing of the proposed building, so that impacts are minimised.

We anticipate that the building's impact will be further refined through future stages of design by the introduction of set backs and cutouts in the building mass.

## PRIVACY

Privacy of residents is best dealt with by ensuring hospital users (staff and patients) do not have access to the edges of the buildings overlooking Kensington Place and Newgate Street.



Illustrative analysis of existing 'average angle to sky' from lowest relevant facing windows'